



ANATECH ELECTRONICS INC
RF & Microwave Filters & Products

824-849 / 869-894 Connectorized Ceramic Duplexer

Part Number: AM836-881D263-C



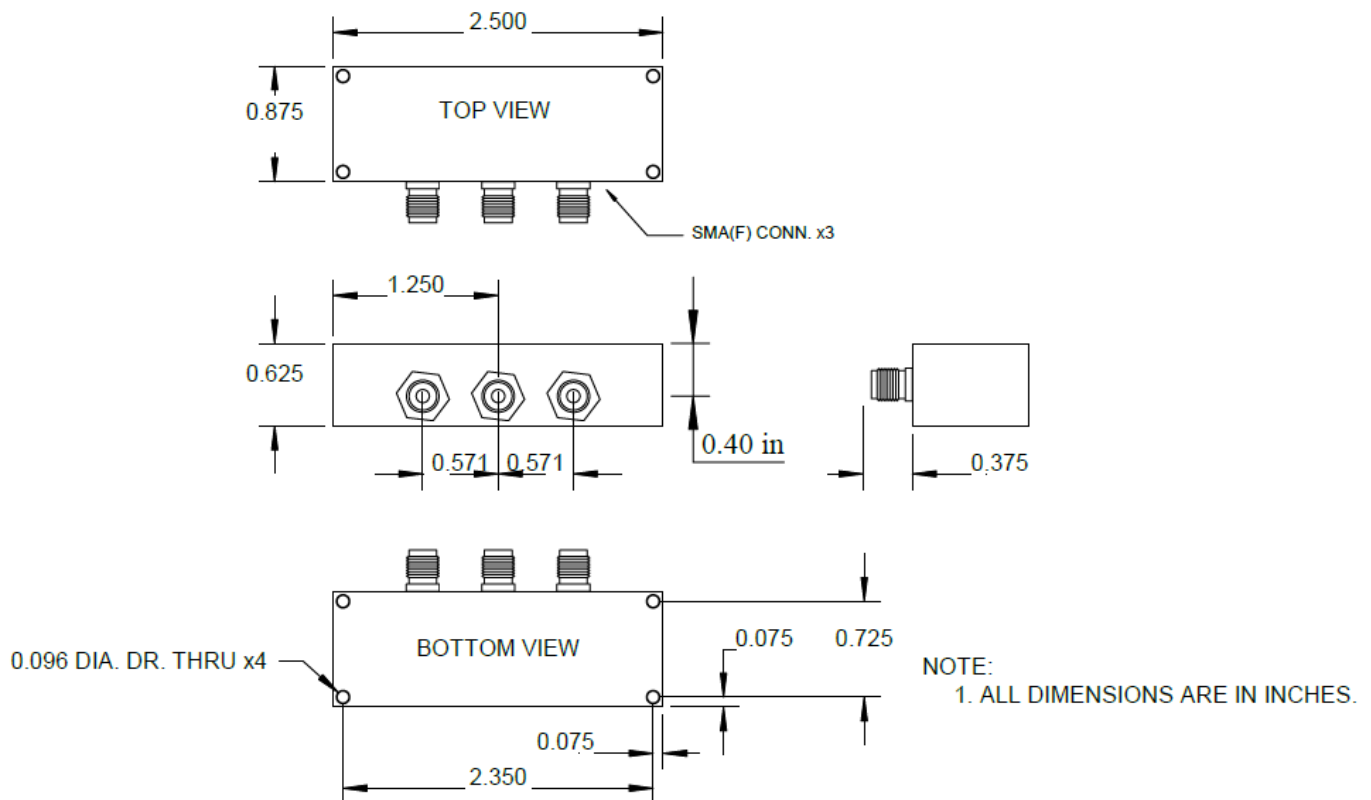
Characteristics	Band 1	Band 2
Passband:	824-849 MHz	869-894 MHz
Bandwidth:	25 MHz	25 MHz
VSWR:	1.5:1 Max	1.5:1 Max
Passband Insertion Loss:	3.2 dB	4.1 dB
Passband Ripple:	1.5 dB	2.0 dB
Input / Output Impedance:	50 Ohms	50 Ohms
Isolation:	55 dB	44 dB
Power Handling:	5 W max	5 W max

Mechanical	
Connector type:	SMA (F)
Dimensions:	2.5 x 0.875 x 0.625 in.

Environmental	
Operating Temperature:	-40 to +70 deg.C
Storage Temperature:	-50 to +90 deg.C

This product is RoHS compliant.

Outline Drawing:



Tolerance: +/-0.01 inches [+/- 0.3mm]

Angles: +/- 1 Deg.

*Tolerance as shown unless otherwise specified in the datasheet electrical specification tables above.

*When max dimensions are called out the above tolerances do not apply as long as it is under the max call out.

70 Outwater Lane Phone: (973) 772-4242
Garfield, NJ 07026 Fax : (973) 321-3941

Email: sales@anatechelectronics.com
Web: www.anatechelectronics.com